

## PATCH

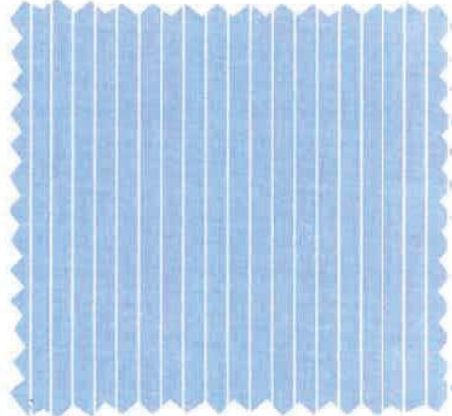
It is a woven patch.

### Patch size

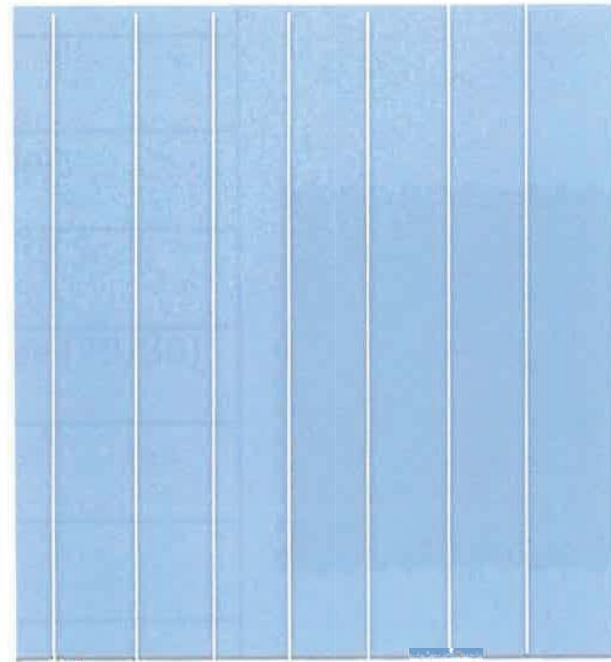
- 40 mm – To be used on the Kindergarten and Primary section Uniforms
- 50 mm – to be used on the secondary class uniforms.



## Fabric 1

Product Category	Shirt H/S & F/S	
Gender	Boys/ Girls	
Category	Primary /Secondary	
Season	Summer / Winter	
Yarn Type	Polyester /Cotton (67/33)	
Count	2/40, 2/40	
GSM	108	
Fabric Type	Plain Weave	
Fabric Colour	Sky Blue with white stripes	

# Details of Fabric



6mm blue stripe

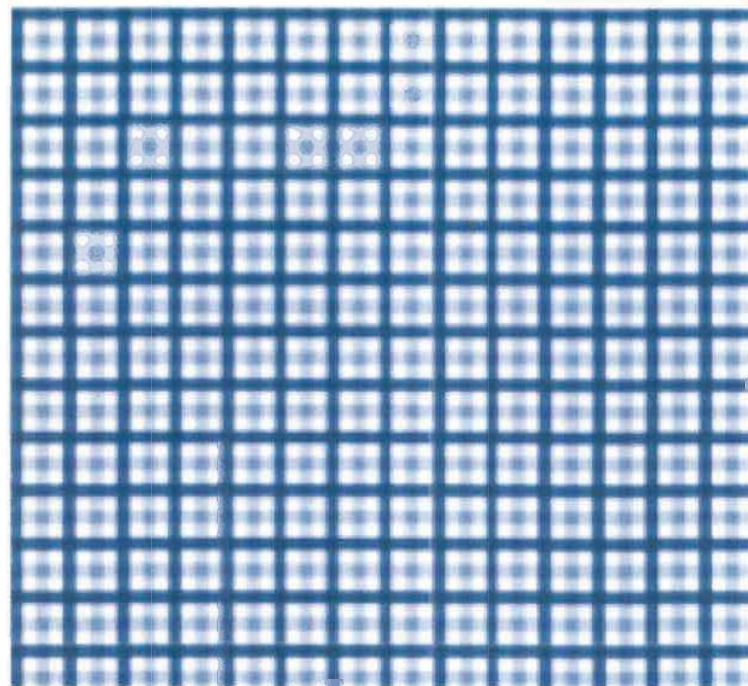
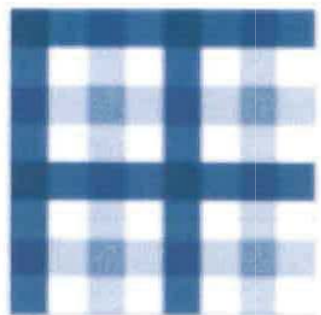
2 mm white stripe

## Fabric 2

Product Category	Shorts/ Skirt/ Trouser	
Gender	Boys/ Girls	
Category	Primary /Secondary	
Season	Summer	
Yarn Type	Polyester /Viscose (70/30)	
Count	2/30, 2/30	
GSM	250 +	
Fabric Type	Twill Weave	
Fabric Colour	Navy Blue	

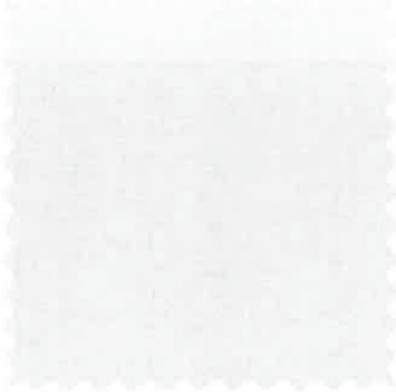
### Fabric 3

Product Category	Tunic/ Shirt	
Gender	Boys/ Girls	
Category	Kindergarten	
Season	Summer	
Yarn Type	Polyester /Cotton (65/35)	
Count	2/40, 2/40	
GSM	120-130	
Fabric Type	Plain Weave	
Fabric Colour	Dark Blue, Sky Blue with white check	



Pantone for Dark Blue 654 C

## Fabric 4


Product Category	Tunic / Shorts	
Gender	Boys/ Girls	
Category	Kindergarten	
Season	Summer / Winter	
Yarn Type	Polyester /Cotton (67/33)	
Count	2/40, 2/40	
GSM	250	
Fabric Type	Plain Weave	
Fabric Colour	White	

## Fabric 5

Product Category	Trouser	
Gender	Boys/ Girls	
Category	Primary /Secondary	
Season	Winter	
Yarn Type	Polyester /Viscose (67/33)	
Count	2/40, 2/40	
GSM	325 GSM	
Fabric Type	Twill 2/2	
Fabric Colour	Grey	




## Fabric 6

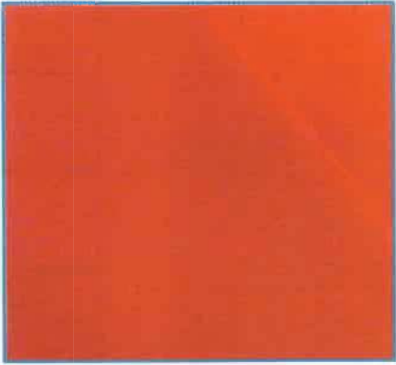
Product Category	Cardigan	
Gender	Boys/ Girls	
Category	Primary /Secondary	
Season	Winter	
Yarn Type	Acrylic 100%	
Count	15s	
GSM	305- 315 GSM	
Fabric Type	Cable Knit	
Fabric Colour	Navy blue and light blue stripe	

\*The count may vary from 10 – 15s

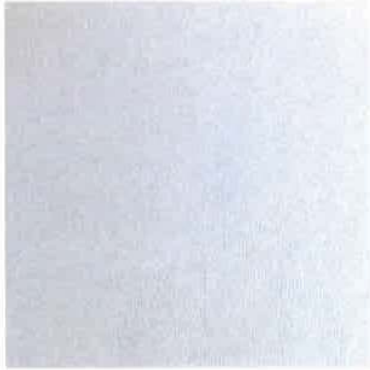
## Fabric 7

Product Category	Blazer	
Gender	Boys/ Girls	
Category	Primary /Secondary	
Season	Winter	
Yarn Type	Polyester/ Viscose ( 70/30)	
Count	2/18, 2/18	
GSM	350 +	
Fabric Type	Plain Weave	
Fabric Colour	Navy Blue	


## Fabric 8

Product Category	Sports T -shirt	
Gender	Boys/ Girls	
Category	Kindergarten/ Primary /Secondary	
Season	Summer	
Yarn Type	Polyester/ Cotton ( 65/35)	
Count	24s	
GSM	200- 220	
Fabric Type	Spun PK	
Fabric Colour	Navy Blue, Red, Yellow, Green	


## Fabric 9

Product Category	Sports Track Pants	
Gender	Boys/ Girls	
Category	Primary /Secondary	
Season	Summer	
Yarn Type	Polyester/ Cotton ( 65/35)	
Count	26s	
GSM	220-250	
Fabric Type	Jersey knit	
Fabric Colour	White	


## Fabric 10

Product Category	Sports T rack Pants / JACKET	
Gender	Boys/ Girls	
Category	Primary /Secondary	
Season	Winter	
Yarn Type	100 % Polyester	
Count	30s	
GSM	260-300	
Fabric Type	Jersey Fleece Knit	
Fabric Colour	Navy Blue and Grey	


## Fabric 11

Product Category	Tie	
Gender	Boys/ Girls	
Category	Primary /Secondary	
Season	Winter	
Yarn Type	100 % Polyester	
Count	2/90, 4 ply	
GSM	140	
Fabric Type	Jacquard Weave Fabric	
Fabric Colour	Navy Blue and Light blue stripes	

## Fabric 12

Product Category	Socks	
Gender	Boys/ Girls	
Category	Kindergarten/ Primary /Secondary	
Season	Summer/ Winter	
Yarn Type	95 % Cotton , 5 % spandex	
Count	2/90, 4 ply	
GSM	160	
Fabric Type	Single Jersey	
Fabric Colour	Navy Blue with light blue stripes and Plain Grey	

## Fabric 13

Product Category	Belt	 
Gender	Boys/ Girls	
Category	Primary /Secondary	
Season	Summer/ Winter	
Yarn Type	100 % Polyester with Iron Buckle	
GSM	180- 200	
Fabric Type	Niwar	
Fabric Colour	Navy Blue and 2 white stripes	



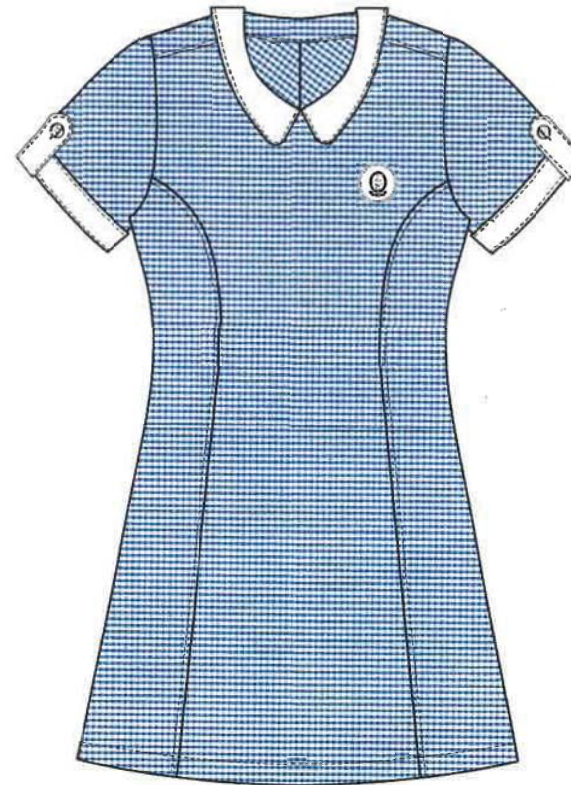
**TUNIC: SSKP03**

White Peter Pan collar round edge  
closer to the neck.

Princess seam dress

Neck opening at the center back  
with same buttons as used on the  
sleeves

Patch size 40mm



**SHIRT: SBKS08**

Single pocket with  
Plain patch pocket  
Logo on the pocket  
( 40mm)



White collar and white edge at the  
sleeve . Yolk at the back with a box  
pleat.

Fabric – Check same as tunic

**TROUSER: SBKP02**

Shorts  
Single pleat at the  
Front



Slant Pocket  
Straight fit

Back welt pocket with simple  
button & Button hole

Waist adjustment as shown below:



SBKS08



White collar to  
match the  
peter-pan  
collar as in  
Tunic

SBKP02



**SHIRT: SBS02**

Single plain pocket  
with logo.

Yolk at the back with  
box pleat .

Logo size 40mm



SBS02



**TROUSER: SBT02**

Shorts

Single pleat at the  
Front

Slant Pocket

Straight fit

Back welt pocket with simple  
button & Button hole

Fabric -

Waist adjustment as shown below:



SBT02



SBS02

**SHIRT: SBS02**

Single pocket with  
Logo patch  
Yolk at the back with box pleat  
Logo size 50 mm



**TROUSER: SBT02**

Single pleat at the  
front  
Straight fit  
Back welt pocket  
with simple button & Button hole



SBT02



Waist adjustment as shown below:



**SHIRT: SBS02**

Single pocket with  
logo patch  
Yolk at the back with  
box pleat



SBS02



**SKIRT: SSK04**

Knee Length  
Button and zip on the  
left side seam  
Slit pocket on the right side seam  
Loops at the waist belt  
Waist adjustment as shown below:



SSK04



Pleat  
stitched till  
hip level.



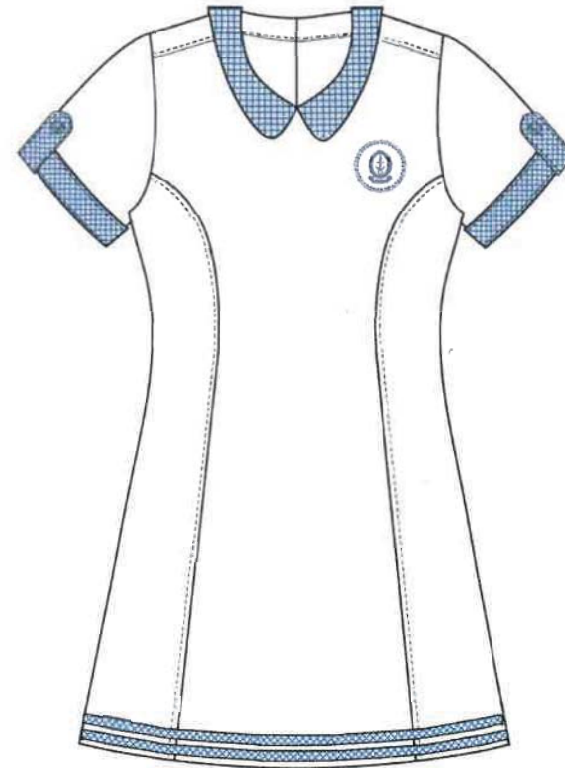
SSKP03

**TUNIC : SSK03**

White Tunic with Peter Pan collar in check fabric and with 2 stripes at the bottom edge of check fabric

The neck opening need to be close to the neck

Opening in the center back with buttons used same on the sleeve.



**T-SHIRT: SPT06 A**

Solid T-shirt

Raglan sleeves

2 white stripes at shoulder to neck  
line

2 thin stripes at the collar (rib knit)

Logo on the left side

Small slit of both sides of the hem  
line

**TRACK PANTS :**

White colour track pants.

Straight fit

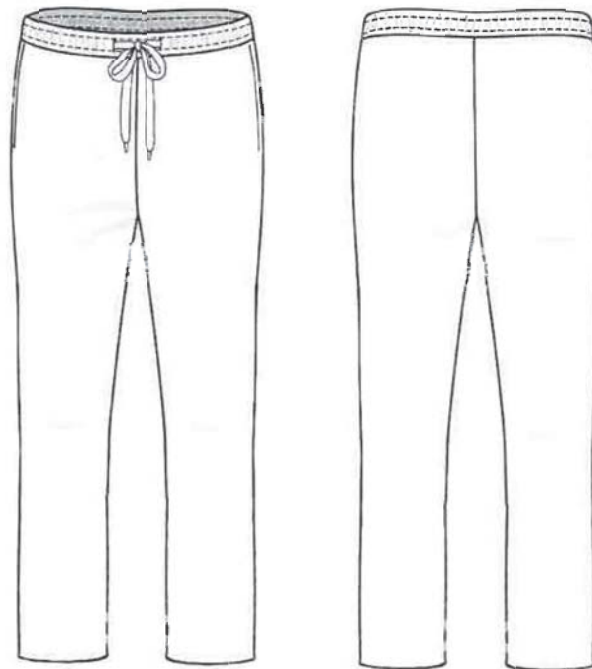
Slant pocket

2 think stripe of house colour,  
matching to the t- shirt.

Elastic at the waist with loop  
and cord in the center front.

Cord to adjust the waist elastic

SPT06 B



**JACKET : SPJ01**

Solid Navy blue colour Jacket with shirt collar and front open zip.  
Grey colour fabric below the collar  
Slit pocket in the side seam on both sides with 2mm grey piping  
Logo on the left side  
Fabric is fleece



**TRACK PANTS :**

Navy Blue colour track pants.  
Straight fit  
Slant pocket on the side seam  
Elastic at the waist with loop and cord in the center front.  
Cord to adjust the waist elastic.





**SHIRT: SBS02**

Single pocket with  
logo

Classic collar

Full Sleeve Shirt

Yolk at the back with box pleat



SBS02



**TROUSER: SBT02**

Plain grey fabric

Single pleat at the front

Straight fit

Back welt pocket with simple  
button & Button hole

SBT02



Waist adjustment as shown below:



## WINTER GIRLS - BLAZER

**Blazer: SGBL01**

Narrow lapel

Thin light blue piping of 2mm

Logo on left size

Princess seam for

better fit with a slip pocket

Buttons same as blazer colour

Slip pocket

[invisible on princess seam]



SGBL01



Slip pocket  
on the  
seam



**Blazer: SBL01**

SBL01

Blazer for Boys –  
Classic shawl collar  
With very thin light blue  
piping ( 2mm)

Flap pockets and one patch pocket  
with slight round edges on the top  
with Logo patch.

Size of the patch pocket smaller, as  
per the size of the blazer

Buttons same as blazer colour



**SWEATER: PSSW07**

PSSW07

Cardigan- Navy blue  
with cable pattern of  
the knit

Light blue stripe comes  
inside the rib portion at the  
Neck line and the cuff





Style no: CPPS 04

Gender:

Style name: CAPS - STYLE 4

Category:

Comments:

Date:

NCS embroidered with the house colour and a

Thin colour strip  
of house colour  
on the edge of  
peak of the cap.



STYLE 10

**Tie :**

Navy Blue solid colour tie with logo  
in the center.

Style 10 - light blue colour 2 thin  
diagonal stripes (Thickness of  
stripe 2mm)

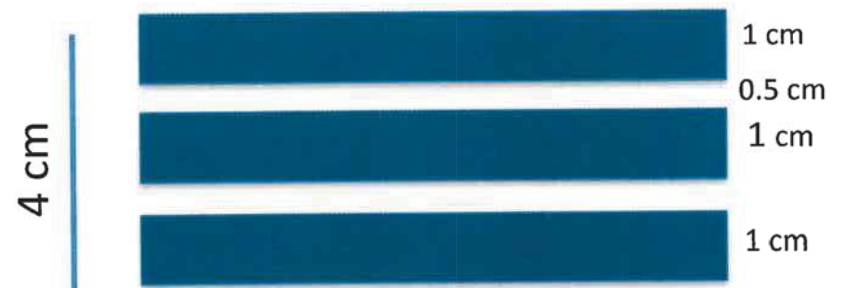
Light blue colour same as shirt  
colour



**BELT: SPB2**

The belt has blue and white stripes or solid blue colour

Steel buckle with NCS logo in the center



SSOC 01

SSOC 08

**Socks: SSOC 08**

Regular – summer and Winter

Summer - Plain navy blue with 2 thin light blue lines, just below the cuff of socks. Light blue colour same as shirt colour.

*(Thickness of stripe 2mm)*



Regular Socks- Summer



Regular Socks- Winter

Winter – Plain Grey socks

Navy blue and Grey colour same as the trouser colour



# SUMMER GIRLS/ BOYS -PRIMARY/ SR. SECONDARY



FRONT VIEW



# WINTER GIRLS -PRIMARY / SR. SECONDARY



WINTER BOYS -PRIMARY / SR. SECONDARY

